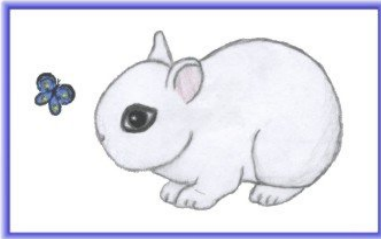


The Dwarf Hotot

"The Eyes of the Fancy"

By: Pamela Nock - ARBA Judge



The Dwarf Hotot (*O-Toe* or also commonly pronounced *Hoe-Toe*) originated in Germany and became an official breed of the American Rabbit Breeders Association in 1984.

The breed has a pure white rollback fur and striking black eyebands. Dwarf Hotots have a compact body type and mature at less than 3 lbs.

The Dwarf Hotot body has sometimes been compared to the shape of a loaf of bread because the Dwarf Hotot shoulders are as wide as the hindquarters and the topline has a gentle rise. The general type of the Dwarf Hotot is the most important consideration when judging before considering the unique eyebands.



The Dwarf Hotot is posed with the front toes even with the eyes and the rear toes even with the hip joint. The Dwarf Hotot is not to be posed in a standing position on the show table.



The Dwarf Hotot's head should be well filled. A long, narrow head or pointed muzzle is not desired. The ears should be short to balance with the head and should be thick. They do

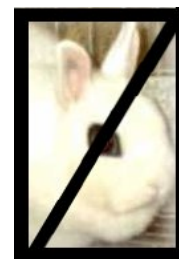
not necessarily need to touch. The eyebands should be vivid black and ideally 1/8 of an inch thick. Heavy, feathered, or uneven eyebands are not desired.



Good Heavy/Feathered Too Thin

Watch for spots or white crescents in the eye due to the Dutch marking gene. Blue eyes are also occasionally seen. Any other eye color than brown would be a disqualification.

A dewlap is a disqualification.



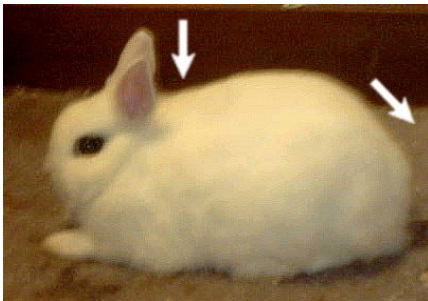
The Dwarf Hotot

"The Eyes of the Fancy"

By: Pamela Nock - ARBA Judge



Good side view showing proper topline, depth and roundness.



Faults

Low Shoulders

Hindquarters slope off, lacking fullness and roundness. Also note the flat spot at the back of the hindquarters (chopped/cut off hindquarters).



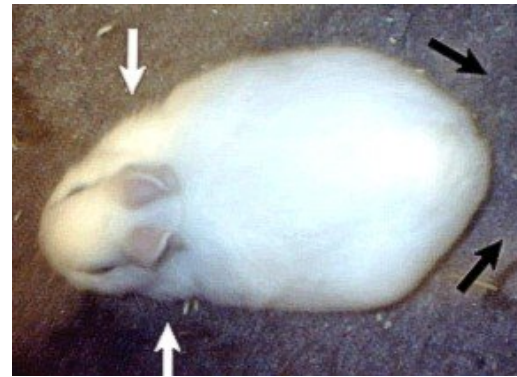
Rear View

Well rounded hindquarters (left) vs rough hindquarters (right). Note the "hollow" areas over the hips on the right photo.

Top View



Good shoulder width. Well rounded hindquarter. Short, compact length of body.



Faults

Narrow Shoulders

"Pinched" Hips

(Rabbits with pinched hips/hindquarters are generally also "cowhocked")



A copy of the ARBA Standard of Perfection book, which contains the Dwarf Hotot judging standard may be purchased online from ARBA at <http://www.arba.net/>

The Dwarf Hotot

"The Eyes of the Fancy"

By: Pamela Nock - ARBA Judge

What's this in the nestbox???



New breeders are often surprised to find Dutch marked or English Spotted kits in their Dwarf Hotot litters. This is not uncommon, as the Dwarf Hotot markings are produced by the Dutch and English Spotting genes. These "mismarks" are sometimes used for breeding and can produce properly marked kits.

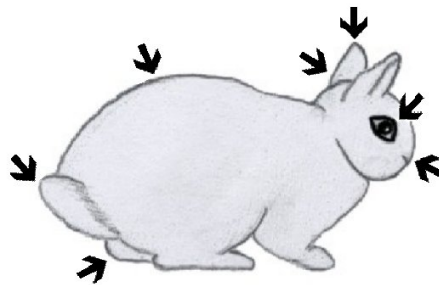


The American Dwarf Hotot Rabbit Club
<http://www.adhrc.com/>



Watch for Spots!

The diagram below shows common areas for spots to occur: peppering at the ear tip, spots anywhere on the ear or ear base, along the spine area, tip of tail, back of hock, black whiskers, nose area (including brown freckles at the edge of the nose), and white spots in the eyes. Do not confuse black tattoo ink along the edge of the ear for black hairs.



This document may not be copied or distributed without expressed permission of the author, Pamela Nock
pamnock@alltel.net
<http://www.geocities.com/pamnock/>



<http://www.geocities.com/madhc1/>